



## MAIN NEWS

### First 'SIMS Olympiad - Pentathlon Championship' Convened at Lonavala Campus

Samundra Institute of Maritime Studies (SIMS) Lonavala successfully convened and hosted its first Olympiad on 19th of February 2018. Participants from other leading Maritime Institutes joined the daylong event adding to the high energy and enthusiasm in the various competitions.

Being the pioneers of Maritime training in the country, SIMS recognizes its responsibilities in contributing to the overall development of the industry, more so, for its future leaders in the form of cadets. The genesis of the Olympiad is part of the broader vision of SIMS in building a strong maritime community as well as creating fellowship amongst the two most important pillars of the onboard team – the engineering and nautical departments. This event is the first of many such initiatives by SIMS.

Extending a helping hand to fellow shipmate from the other departments makes one aware of their strength and limitations. The championship aimed for the cadets to comprehend how indispensable and important a friend from the Bridge or Engine-room would be.

The Pentathlon championship tested the teams in various skills that are required onboard for running a ship efficiently and safely. These included navigation skills, workshop skills, swimming skills, stage skills and professional skills. The event witnessed high engagement amongst the teams whilst they proved themselves in both technical and soft skills.

The technical competitions tested workshop dexterity such as filing, hacksaw cutting and gasket cutting jobs. The navigation-sea segment tasked the teams in identifying vessels through OOW simulator, rope slicing and heaving line throw. Soft skills such as professionalism

and leadership skills were adjudged through knowledge sharing presentations made by all teams and interpersonal skills through a skit (stage competition). Each team was timed in performing these tasks and ranked accordingly.

Concluding the event, Chief Guest Mr. SM Iyer - Resident Director, ESM India implored the cadets to keep up the spirit of team work, pride and safety practices in their future careers. Participant Cadet from Great Eastern Institute of Maritime studies thanked SIMS for the opportunity, "During admission time I applied in both Samundra and Great Eastern, but got selected in Great Eastern Institute. So when I heard the news of SIMS Olympiad, I didn't lose any chance to participate in the events and my dream came true to see Samundra Institute fully".



Continue on page 9

## SAFETY MOMENT OF THE MONTH

### Touch Bottom in Uncertain Waters

*\*\* Note: This monthly safety moment is collected from various sources for educational purpose and is not necessary an actual incident from the ESM fleet.*

**A tanker was loading at a river port. The Master had requested confirmation of the maximum allowed sailing draught as well as the actual depths of the river, taking into account the peculiarities of the season (river flood) and a recent tropical storm that could affect water depth. The information received was that they could safely load up to a draught of 13.72 metres. Due to the cargo nomination they loaded only to 13.55m before departure.**

Once loading was completed, the vessel began the outbound passage under pilotage. After almost 10 hours underway the vessel temporarily touched bottom. The ship's speed was reduced

to zero and then regained. Only after several extreme helm orders, the vessel was kept in the channel.

It continued to anchorage for an underwater inspection and class attendance. The underwater survey showed that all four propeller blades had minor strike damage to their leading edges.

Several days after the incident, local authorities reduced the maximum allowed draught to 13.41m and limited traffic to one-way passage at the area of the incident.

The company investigation found, among other things, that:

- The touch bottom incident was quickly

realized and the corrective actions were made immediately.

- The effectiveness of the bridge team was paramount. An inappropriate response to the incident could have led to grounding and/or severe damage to the propeller and the rudder.

- Lessons learned

- Remain ever vigilant even under pilotage, as quick, decisive action may be necessary to avoid bad outcomes.
- In river areas affected by a variety of factors that can influence water levels in unpredictable ways, even local authorities can sometimes be outside the envelope of safety.

## Letter of the Month



At ESM, there's always a strong belief and conviction that talents and leadership need to be honed, nurtured and cultivated for an Organization which can grow and sustain meaningfully. The two different news in this newsletter gives ample reason for us to celebrate the success of this conviction. Yet another new batch of senior leadership has been appointed as part of the new requirement of the Organisation and we are proud to announce this group through this newsletter. The new team has been identified and groomed over a period as a part of the leadership growth programme since 2015. Hearty congratulations to our high performers and their meaningful contributions to the growth of the company.

SIMS, ever since its inception has taken its role seriously in producing the future leaders of the maritime industry. The institute took initiatives as leading maritime institute of the country by organizing and hosting an Olympiad for the cadets across the maritime institutes of the country. We are pleased to cover the event held at the Institute's sprawling campus at Lonavala in the month of February. The event is part of the broader vision of SIMS to lead the maritime industry towards the next stage of growth by inculcating the right set of values and professionalism among the fellow seafarers. Congratulations to the winning as well as organising team for the success of the event!

We continue with the series on our stalwarts of Executive's success story and this newsletter brings the two interesting stories of Natasha and Kumar, whom we are extremely proud of. They both truly represent the spirit and ethos of Executive-indomitable and never say never! Wishing both the very best in their continued success and long innings with Executive.

Our regular features on Technical, Health and Environment are included and we do hope our efforts to bring in the practical aspects of these very topical issues will be found interesting by all our readers. Any comments and views will be always welcome by our editorial team and the contributors.

Before I sign off, here's wishing all our Indian seafarers a Happy Holi on 02nd March. May this festival of colours bring more happiness and positive vibes around us, Have a safe voyage till we bring out the next newsletter!

Sikha Singh

## Editorial Team

### Editorial Director

Sikha Singh

### Editorial Assistant

Sara Cherian

### Editorial Advisor

Capt. Arun Sundaram

### Design

Nurul Aini Mohd Ikhsan

### Layout & IT Support

Peter Chan

To contribute or be featured in the website, do write to us at [crew14@executiveship.com](mailto:crew14@executiveship.com) or [crew9@executiveship.com](mailto:crew9@executiveship.com)



*ESM would like to extend warm greetings for Holi on 2nd March (India) and Good Friday on 30th March*

TECHNICAL NEWS

# Bilge Pump Bearing Failure

The below is a preventable case of bilge pump failure due to bearing damage and important lessons learnt from this incident in order to prevent re-occurrence of such failures.

**Initial findings:**

During a voyage on a particular day, bilge pump was found to be developing very less pressure and rate of pumping was found to be very low while performing routine bilge transfer operation. Upon inspection a very small displacement of the piston was detected, together with chattering noise emanating from the crank chamber cover. The pump was stopped, isolated and dismantled to investigate the cause of problem.

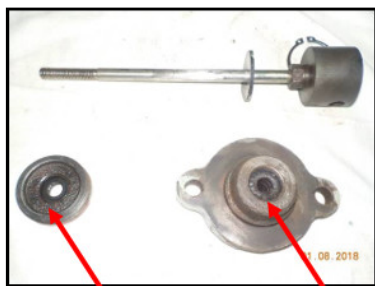
The condition of oil inside the crank chamber was found to be in poor state and all three bearings supporting the crank shaft were found damaged.



**Deteriorated Oil Condition & Damaged Connecting Rod Bearing**

Thereafter all parts were dismantled and cleaned. These were inspected carefully for any possible damage. The crank chamber, casing, oil seal and all other parts were found in good order, whereas the gland packing & three bearings were damaged.

**Shaft Oil Seal & Leaking Gland Packing**



**Shaft Oil Seal**

**Leaking Gland Packing**

Further investigation and observation:

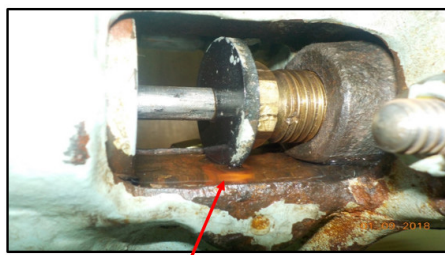
On further investigation, it was revealed that the gland packing of the pump had been leaking excessively for some time. Additionally the drain point provided near the gland packing was clogged and the leaked off water used to overflow from the small drain sump near the gland packing.

**Observation/Understandings:**

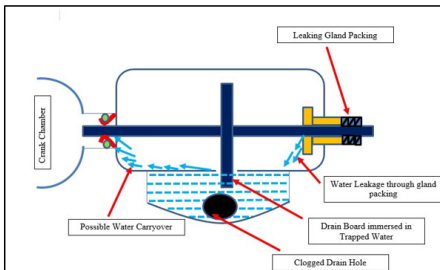
In view of the above condition, the movement of the drain board (flinger attached to shaft) would have carried the water contained in the sump to the Crank chamber, which had only an oil seal as leakage protection (intended to prevent the leakage of oil from inside of the crank chamber to outside).

When the drain sump became full (by clogging of the drain point), the drain board was immersed in water and facilitated carry over of water from the drain sump to inside of the crank chamber through the oil seal.

Attached photos and drawings can be seen to obtain for a clear understanding.

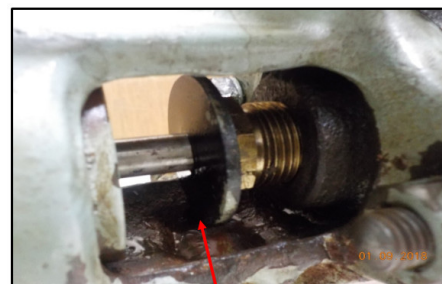


**Drain Board immersed in water with clogged drain hole.**

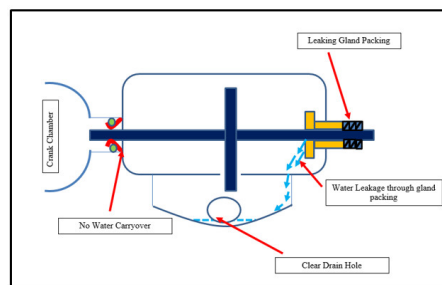


Work carried out on Bilge Pump:

When the leakage quantity became excessive, a drain pipe was installed in the drain point after clearing the drain hole, however gland packing was not renewed and the leakage continued through the drain pipe.



**Drain Board with clear drain hole, no water immersion.**



Conclusion:

As explained before, the ingress of water into the crank chamber through the oil seal due to the clogged drain hole would have caused contamination of the oil inside the crank chamber, which eventually led to the failure of lubrication and damage of bearings of the crank shaft.

Immediate Cause of Bilge pump failure: Ingress of water inside the Crank Chamber and failure of lubrication and subsequent damage of the bearings.

Root Cause:

Basic cause was lack of supervision or poor judgment in failing to anticipate the after-effect of such a condition, which led to the failure of lubrication and damage of bearings.

Corrective Action:

- Renew leaking gland packing, damaged bearings and install new shaft seal.
- Ensure that gland leakage is minimal as per instruction manual (2 drops/minute) and drain hole is clear at all times.

Preventive Action:

- Train all Engine room staff regarding the possible outcome of such a condition with drain hole clogged.
- Routine inspection of oil condition and bearings to be included in the PMS of the machinery.

A defect once noticed should be rectified completely such that the source of defect is fully addressed and should not be limited to making a temporary arrangement only.

ENVIRONMENTAL NEWS

# Creating Greener Fuel By Capturing The Power Of Algae Cells

Researchers from the University of Cambridge have tapped on the potential of algae and harnessed its energy to efficiently create clean energy. By improving current models of biophotovoltaics systems, it is able to optimize its processing five times more and remain cost-friendly.

As the threat of climate change increases, there is an urgent need to search for cleaner and renewable alternatives to fossil fuels that does not contribute extensive amounts of greenhouse gases. Solar energy, which is found in abundance is one such attractive source of power. It is used for photosynthesis in most microorganisms and scientists have engineered a process to utilize this in converting an effective means of electric current production. This in turn may be harnessed further to produce clean energy for rural areas around the world.

Photovoltaic systems produce electrical current when a specific substance is exposed to light which is used in products such as the solar panels. Aside from these

synthetic photovoltaic devices, biophotovoltaics (BPVs) also known as biological solar cells have emerged as an effective option for producing energy. The BPVs typically absorb light and generate electricity as soon as they have been secreted as electrons within the cell. This process occurs in one single compartment of the cell.

However in the new research discovery, scientists from various disciplinary who collaborated, developed a two chamber BPV system within genetically modified algae wherein the processes involved in operation of the cell are separated – one chamber generates the current from the electron and the other converts it to power. Building the device in such a manner optimizes the simultaneous performance of the different mechanisms. In one compartment, the generation of electrons needs to be exposed to sunlight. In the other, the conversion to electricity does not require sunlight and needs to be efficient with minimal losses. The energy created could also be stored and not be used immediately, as would be in the case of a single compartment system.

This would be advantageous in generating the charge during daytime and using it at night.

These biophotovoltaic cells were noted to have created five times more energy than previous designs. Since algae multiply naturally, such systems would require minimum investment and be produced in a decentralized manner.

This new discovery and invention poses to be extremely beneficial in those areas that are not connected to any electrical grid such as rural villages. For example, in rural Africa where there is abundance of sun and no power grid, this new BPV system can be used to improve their quality of life while using cleaner and cheaper energy sources. In comparison with the synthetic photovoltaic which are required to be produced in exclusive centres or facilities, the BPVs process may be conducted by the local community itself for immediate utilization. This brings us closer to a more feasible implementation of greener fuels in the coming years.

NEW JOINERS

## SIMS Cadets Joining the Fleet as Officer

Adding on to the growing number of Jank and Engineering cadets from SIMS Lonavala and joining onboard ships managed by ESM as officers, are the following.



- |                                |                |                              |               |
|--------------------------------|----------------|------------------------------|---------------|
| 1. JO MANINDER SINGH           | GSW FORWARD    | 9. JE NIKHIL KUMAR CHANDAN   | DREGGEN       |
| 2. JO NAMAN GUPTA              | GSW FIGHTER    | 10. JE PARMINDERPAL SINGH    | RED EAGLE     |
| 3. JO NIKHIL KALIA             | GSW FABULOUS   | 11. JE AMARDEEP SINGH WALIA  | LAPEROUSE     |
| 4. JO ISHMEET SIDHU            | RED EAGLE      | 12. JE JATIN MALIK           | ERIA COLOSSUS |
| 5. JO AMARJEET PRAJAPATI       | ZARIFA ALIYEVA | 13. JE SANDEEP GAUR          | CARTAGENA     |
| 6. JE PRASHANT S. BHARRMURADDI | SHAH DENIZ     | 14. JE CHAITANYA RAMISETTI   | MAREX NOA     |
| 7. JE RAVI HIRENKUMAR SHAH     | ASTRID         | 15. JE DHARAN RAO GOURAVARAM | RENAUD        |
| 8. JE ARSHDEEP SINGH           | SALAMINIA      |                              |               |

## MIND YOUR BODY

## Dietary Intervention Can Dramatically Lower Blood Pressure In Hypertensive Adults



Findings of a new study by the American Heart Association presents hypertensive adults with a new option of treatment. Diet intervention consisting of low sodium combined with Dietary Approaches to Stop Hypertension (DASH) in adults suffering from high blood pressure have been observed to significantly lower their blood pressure more than just consumption of anti-hypertensive medication.

Previous researches have noted that having either Dietary Approaches to Stop Hypertension (DASH) or low sodium diets has the ability to decrease blood pressure in adults diagnosed with hypertension. It has been observed that sodium raises blood pressure because it retains water in the body. The elimination of salty foods from your diet and reduction in the amount of salt in cooking could prevent such symptoms from occurring.

The other recommended diet, DASH, is rich in fruits, vegetables and whole grains along with low or fat-free dairy, fish, poultry, beans, seeds and nuts. It was found to be full of nutrients such as potassium, calcium and magnesium, which in turn aids in the decrease of blood pressure. The results of these studies led to researchers being curious to the effects when combined.

A recent study by the American Heart Association examined the effects of combining these type of diets in adults who had early or modest form of high blood pressure (prehypertension or a stage 1 hypertension).

Such individuals are at a greater risk for developing more severe forms of hypertension which includes stroke, kidney disease, heart attacks and heart failure. To make the test results accurate, none of the test subjects were taking any form of long-term antihypertensive medication which reduces the blood pressure numbers by average of 10-15.

The study presented with the findings that participants who followed the combined diet had reduced blood pressure compared to the participants with a large sodium intake while eating their regular diet. It also found a reduction of the blood pressure was greater with the severity of hypertension. Participants with blood pressure over 150 mm-Hg showed the most significant difference with the low sodium-DASH diet than those not on the diet.

The results established additional evidence that dietary intervention are as or more effective than antihypertensive drugs in the market for those at increased risk for elevated blood pressure. It should be a routine first recommendation treatment for such individuals.

More studies are required to investigate the impact of the low-sodium/DASH diet on a larger sample size and with those who have a blood pressure of 160 mm-Hg. Meanwhile, this study provides positive outlook for people who are hypertensive that they are able to be treated through a corrective diet.

*“ The results established additional evidence that dietary intervention are as or more effective than antihypertensive drugs in the market for those at increased risk for elevated blood pressure. ”*

# HAPPY BIRTHDAY!

## CREW BIRTHDAYS

Many Happy Returns to the following on their Birthdays during the month of MAR 2018!

NAME	BIRTHDAY	VESSEL	NAME	BIRTHDAY	VESSEL
MST CHUNNILAL HARIRAM CHOUDHARY	07-MAR	CLAXTON BAY	30 RISHBHANAND PATHAK	06-MAR	SANTOS
MST INDRAJIT GUHA	25-MAR	FS ENDEAVOR	CE REYNALDO SAQUITON QUIBILAN	01-MAR	NAVIOS SOUTHERN STAR
MST JOSEPH MAUREEN SILVEIRA	18-MAR	ALPINE MOMENT	CE DIPTA DUTTA	13-MAR	NORD TITAN
MST JAYANT ARINDAM BANERJEE	26-MAR	HIGH JUPITER	CE KSHEPAK GUPTA	24-MAR	ALPINE MYSTERY
MST JAGJIT SINGH RANDHAWA	31-MAR	LUBERSAC	CE MAHESHWAR SINGH	31-MAR	MARLIN APATITE
MST JASWANT SINGH	02-MAR	ZARIFA ALIYEVA	CE AVIN KUMAR	07-MAR	ALHANI
MST PRADIP KUMAR	01-MAR	VICTOIRE	CE SARVESH KUMAR PANDEY	10-MAR	GSW FABULOUS
MST MUKESH KUMAR	15-MAR	ALHANI	CE SHIVAJI CHAPLA JADHAV	10-MAR	MAREX EXPRESS
MST SAYAN CHAUDHURI	06-MAR	ST. GERTRUD	CE PRABHAT SINGH	14-MAR	MARLIN AMETHYST
MST NIKHIL KUMAR RAI	01-MAR	E PIONEER	CE BALU KUMARESH VADIVELU	16-MAR	LAPEROUSE
MST AMIT SAHOO	18-MAR	EAGLE EXPRESS	2E ARNULFO DESAGUN PIOL	12-MAR	NEW GRACE
MST PRABHAT KUMAR GUPTA	01-MAR	SALAMINIA	2E KUMARASILAN JAGARAJAN	11-MAR	EXECUTIVE COURAGE
MST KUNAL KASHYAP	06-MAR	MARLIN AMETHYST	2E RAVNEET SINGH	17-MAR	E PIONEER
MST PRINCE GAURAV	15-MAR	MAREX NOA	2E BIJOY GEORGE	23-MAR	ATLANTIC CROWN
CO KUMAR GAURAV	15-MAR	GSW ADVENTURE	2E ROHIT SHAMBHUDAYAL SHARMA	19-MAR	ALQADISIA
CO BANDAN KUMAR	01-MAR	AFRA OAK	2E SHYAM KUMAR CHALLURI	21-MAR	UACC HARMONY
CO JASON MORANTE BOTARDO	04-MAR	NEW GRACE	2E ANUP BHARATHAN NAIR	18-MAR	AFRA HAWTHORN
CO AMIT KHATTER	30-MAR	UACC SHAMS	2E GURPREET SINGH GHOTRA	27-MAR	LR2 PIONEER
CO NISHANT RUKHAIYAR	02-MAR	ALQADISIA	2E AKASH PRAKASHCHANDRAN	22-MAR	GSW FIGHTER
CO MOHAMMAD ZAHID PARWEZ	17-MAR	MAEA	2E PARAS SHARMA	22-MAR	ATLANTIC CANYON
CO UDAYAN	27-MAR	ATLANTIC AQUARIUS	2E RAJMOHAN MUTHURAMALINGAM	31-MAR	YAMABUKI
CO YESHU GUPTA	27-MAR	AFRA HAWTHORN	2E GAUTAM AMIT	29-MAR	PALANCA MAPUTO
20 EMMANUEL AMISTOSO OBANIL	02-MAR	CRIMSON PRINCESS	3E YURIY BUSHYNKIN	06-MAR	EXECUTIVE PRIDE
20 ALFREDO JR VICTORINO TOLENTINO	15-MAR	GEMINI PIONEER	3E NIRANJAN KEDAMBADI VASU	09-MAR	ST. GERTRUD
20 JORDAN GANDEZA NAVAL	14-MAR	NAVIOS SOUTHERN STAR	3E REJIN RAVINDRAN	17-MAR	AZERI GAS
20 MANMOHAN VATTAMATTAM	08-MAR	AFRAMAX RIO	3E VIKRAM VIJAYA KUMAR PITCHAI	26-MAR	CLAXTON BAY
20 RAHUL JOHN KADUPPIL	17-MAR	NEW BREEZE	3E NIKHILESH UPADHYAY	02-MAR	YAMABUKI
20 AKSHAY THUWAL	30-MAR	ATLANTIC AQUARIUS	3E ARAJ KUMAR KASHYAP	14-MAR	ALPINE MOMENT
30 VINICIUS GOMES DE ALMEIDA	01-MAR	SANTOS	3E NIJIL NALLITHODI UNNIKRISHNAN	07-MAR	MAEA
30 FLAVIN FRANKLIN VAZ	06-MAR	KAMOME VICTORIA	3E ALOK THYAGARAJAN	28-MAR	MARLIN APATITE
30 MIDHUN EPHRIM	31-MAR	GRAN COUVA	3E MOHD ISLAHUDDIN	21-MAR	UACC CONSENSUS
30 HARPREET SINGH	06-MAR	ARAGO	4E EFRAIM OCAYA ROMEY	10-MAR	NEW MILLENNIUM
30 GAGANDEEP SINGH RANOTRA	09-MAR	MARLIN APATITE	4E ASSIM DARJAHAN SAJEETHA	25-MAR	E PIONEER
30 MARTIN RAJU MUTHANATTU	19-MAR	YAMABUKI	4E PRANAV SUHAS AMBETKAR	02-MAR	UACC SHAMS
30 CARLO DELA CRUZ ANDRES	21-MAR	NEW HORIZON	4E ABHISHEK BOSE	16-MAR	SHAH DENIZ
30 VIKRAM SINGH	31-MAR	UACC FALCON	4E VENKATA SATYA RAVI SUJAN MUNJETI	18-MAR	LR2 POSEIDON
30 LUIT SAIKIA	01-MAR	ATLANTIC AQUARIUS	4E AKASH RAJKUMAR BANSOD	11-MAR	ALQADISIA

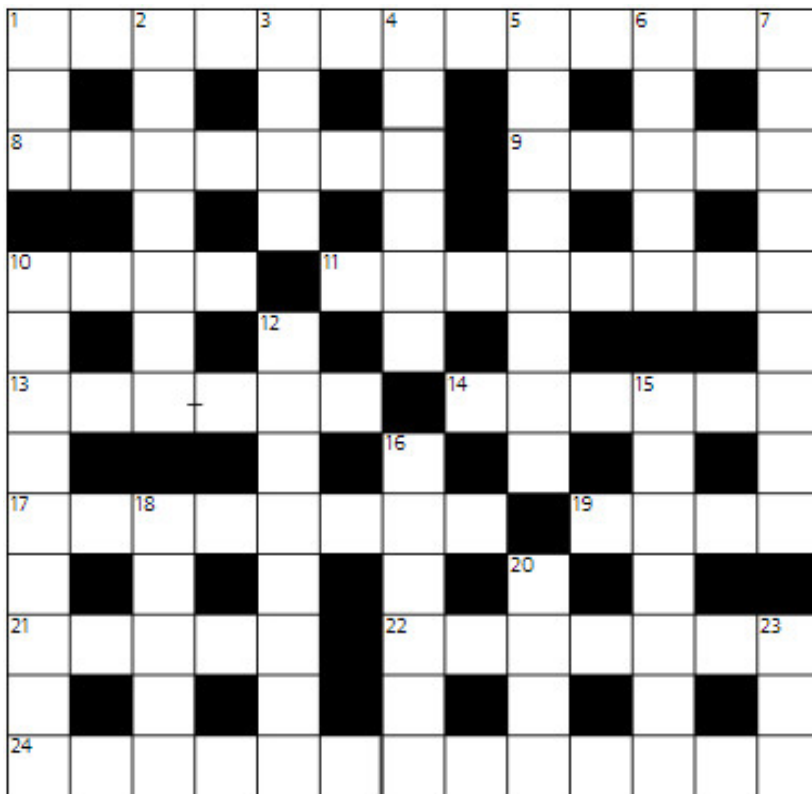
## PUZZLES ANSWERS FOR ISSUE 154

1	R	E	A	D	M	I	T	C	K	L				
	I	V	E			8	I	L	L	W	I	L	L	
9	S	E	A	F	R	E	T	E		D		O		
	K	I		R		10	L	E	A	P	D	A	Y	
11	S	P	L	A	Y		E	R		I		D		
	I			13	G	I	D	D	I	N	E	14	S	S
	N		O				N				A			
15	R	E	C	U	R	R	I	N	G			R		
	E		O		O		N		18	H	O	P	I	T
21	S	E	N	S	U	A	L		O		L			I
	I		F		N		22	A	B	U	S	I	V	E
23	G	L	A	D	D	E	N		S		E			I
	N		B		S		24	D	R	E	S	D	E	N

	1	2	3	4	5	6	7	8	9
A	1	9	2	6	5	7	3	4	8
B	8	3	6	4	9	2	5	7	1
C	7	5	4	3	1	8	9	2	6
D	6	1	5	8	4	9	7	3	2
E	2	4	3	7	6	5	1	8	9
F	9	7	8	2	3	1	4	6	5
G	5	6	7	9	8	4	2	1	3
H	4	8	1	5	2	3	6	9	7
I	3	2	9	1	7	6	8	5	4

PUZZLES

CROSSWORD PUZZLE



Across

- 1 Beyond words (13)
- 8 Metered vehicle for hire (7)
- 9 Use a brush on canvas (5)
- 10 Solid with square faces (4)
- 11 See 14
- 13 Contract between those about to marry (3-3)
- 14, 11 Cheese and bacon pastry dish (6,8)
- 17 Giant (of Rhodes?) (8)
- 19 In a lazy manner (4)
- 21 Time and again (5)
- 22 US residents of Spanish origin (8)
- 24 Bathroom hang-up? (6,7)

Down

- 1 Distinctive theory (3)
- 2 Elevate (7)
- 3 Tool – select (4)
- 4 Wholesale (2,4)
- 5 Organism resistant to antibiotics (8)
- 6 Russian pancakes (5)
- 7 To a high degree (9)
- 10 Roomy (9)
- 12 See 16
- 15 Solo passage at end of a piece of music (7)
- 16, 12 Offence against common decency (6,8)
- 18 Prize draw (5)
- 20 Celestial body (4)
- 23 Behave badly (3)

	1	2	3	4	5	6	7	8	9
A		5	4		9				
B		9				2		5	7
C				8			2		
D			9			4			2
E	6		8			1		3	
F				9					
G	4	8			1				6
H		7	2						8
I	9		1		5	8			

SUDOKU OBJECTIVE

The objective of the game is to fill all the blank squares in a game with the correct numbers. There are three very simple constraints to follow. In a 9 by 9 square Sudoku game:

- Every row of 9 numbers must include all digits 1 through 9 in any order
- Every column of 9 numbers must include all digits 1 through 9 in any order
- Every 3 by 3 subsection of the 9 by 9 square must include all digits 1 through 9

\*\* All answers will be provided next issue.



# SAMUNDRA INSTITUTE OF MARITIME STUDIES (SIMS)

Graded A1 outstanding (Amongst top Maritime Institutes in India), obtained in the inspection conducted by the Government-recognised independent body ClassNK, Japan (Nippon Kaiji Kyokai) – largest classification society in the world

## COURSE SCHEDULE – MARCH 2018 TO MAY 2018

### SIMS MUMBAI - DG APPROVED COURSES

COURSE	DURATION	DATES
Basic Training for Oil and Chemical Tanker Cargo Operation (BTOCT)	6 days	On Request
Specialized Training for Oil Tanker Course (TASCO)	12 days	26 Mar, 26 Apr
Specialized Training on Chemical Tanker Operation (CHEMCO)	12 days	26 Mar, 23 Apr, 7 May
Specialized Training on Gas Tanker Operation (GASCO)	11 days	12 Mar, 9 Apr
Ship Manoeuvring Simulator (SMS)	5 days	26 Mar, 23 Apr

### SIMS LONAVALA STATUTORY - DG APPROVED COURSES

COURSE	DURATION	DATES
Electronic Chart Display and Information System (ECDIS)	5 days	05 Mar, 02 Apr, 21 May
Engine Room Simulator - ML	5 days	12 Mar, 09 Apr, 14 May
Engine Room Simulator - OL	3 days	19 Mar, 02 Apr, 07 May
Free Fall Lifeboat (FFLB)	2 days	20 Mar, 17 Apr, 03 May

### SIMS MUMBAI - OFFSHORE COURSES

COURSE	DURATION	DATES
Basic H2S (OPITO Approved)	½ day	On Request
DP Basic (N.I Approved)	5 days	12 Mar, 26 Mar, 09 Apr, 23 Apr, 14 May, 28 May
DP Advanced (N.I Approved)	5 days	05 Mar, 19 Mar, 02 Apr, 15 Apr, 07 May, 21 May
DP Maintenance	5 days	Every Monday

### SIMS - VALUE ADDED COURSES

COURSE	DURATION	DATES	COURSE LOCATION
FRAMO Cargo Pumping System (FRAMO)	3 days	12 Feb, 12 Mar, 09 Apr	Mumbai
ME Engine	2 days	On Request	Mumbai
Turkish Straits Dardanelles & Bosphorus (TSDB)	2 days	On Request	Mumbai
Ice Navigation	2 days	On Request	Mumbai
Large Vessel Manoeuvring (LVM)	2 days	On Request	Mumbai
Advance Safety Training on Chemical Tankers - Type 2 (ASCT - Type 2)	3 days	On Request	Mumbai
Marine Electrical Practice (MEP)	5 days	26 Mar, 23 Apr, 28 May	Mumbai
Chartworld ECDIS	2 days	On Request	Mumbai / Chandigarh / Kochi / Kolkata
JRC – ECDIS (JAN-7201/9201 JAN-701/901M/701B/901B/2000) 2 days	2 days	On Request	Mumbai / Chandigarh / Kochi / Kolkata
TRANSAS ECDIS (NAVI SAILOR 4000)	2 days	On Request	Mumbai / Chandigarh / Kochi / Kolkata
ECDIS SIMPLIFIED	1 day	On Request	Mumbai / Chandigarh / Kochi / Kolkata
Port State Control & Oil Major Inspections (PSCOM)	2 days	On Request	Mumbai / Chandigarh / Kochi / Kolkata
Risk Assessment	1 day	On Request	Mumbai / Chandigarh / Kochi / Kolkata
Incident Investigation	1 day	On Request	Mumbai / Chandigarh / Kochi / Kolkata
Maritime Resource Management (MRM) (All Academy, Swedish Transport Agency Approved)	4 days	On Request	Mumbai / Chandigarh / Kochi / Kolkata

#### SIMS Advantage

- State-of-the-art training facilities
- Central booking for all courses from Mumbai
- Mumbai campus located at Govandi, barely 20 mins from Seamen's Club
- Reasonably priced accommodation available close to Mumbai campus
- Transportation and hostel facilities at Lonavala
- Online booking facilities on [www.samundra.com](http://www.samundra.com)
- SIMS Introduces the "ECDIS SIMPLIFIED" one day course for seafarers, auditors and inspectors. This coincides with the Ongoing PSC concentrated inspection campaign on ECDIS.
- SIMS offers Navigational Training on full mission bridge simulator for Dover, Messina, Gibraltar, Singapore and Turkish Straits.
- We also conduct FURUNO ECDIS Course at SIMS Kolkata

AdvT\_33

#### For Course Bookings, Please Contact:

**SIMS Lonavala**  
Village Takwe Khurd  
Mumbai-Pune Highway  
(NH4), Lonavala, Dist. Pune,  
Maharashtra - 410405  
<https://goo.gl/maps/4J9YT2BE1NT2>

**SIMS Kolkata**  
Godrej Genesis, Unit No #503,  
5th Floor, Plot #11, Block E.P  
& G.P, Salt lake, Sector V,  
Kolkata 700091  
<https://goo.gl/maps/4nUiq1CrSuN2>

**SIMS Mumbai**  
5th Floor, Sai Commercial Building, BKS Devshi Marg,  
Govandi Station Road, Govandi East Mumbai, PIN- 400088 India  
Tel: (91)22 67031571/67993545 Fax: 67993546 Mobile: **9819811366**  
Email for Offshore Courses: [dp@samundra.com](mailto:dp@samundra.com)  
Email for all other courses: [training.sims@samundra.com](mailto:training.sims@samundra.com)  
<https://goo.gl/maps/AbqJKfk2Mty>

**SIMS Chandigarh**  
CVU-1 Central Plaza,  
Sector 105, Mohali Hills,  
Banur Landran Road  
Greater Mohali  
<https://goo.gl/maps/RvwukP914RS2>

**SIMS Kochi**  
ESM Complex, Near Gold Souk,  
St. Rita's Road, Ponnuruni,  
Vyttila PO, Kochi 682019  
<https://goo.gl/maps/YyTjJaHbKw32>

**MAIN NEWS**

# First 'SIMS Olympiad - Pentathlon Championship' Convened at Lonavala Campus - Continued

Congratulations to all the participating and winning teams for their excellent sportsmanship as well as the Organising team at SIMS Lonavala in making this event a grand success. Below are the winning teams in respective categories -

**Professional Skills:**

First Position – SIMS

Second Position - Tolani Maritime Institute



**Stage Skills:**

First Position – SIMS

Second Position - Tolani Maritime Institute



**Swimming Skills:**

First Position - Great Eastern Institute of Maritime

Second Position - Anglo Eastern Maritime Academy



**Workshop Skills:**

First Position – Anglo Eastern Maritime Academy

Second Position - Tolani Maritime Institute

**Navigation Skills:**

First Position - Tolani maritime institute

Second Position - SIMS



**Participating Maritime Institutes:**

- Training Ship Chanakya
- Hindustan Institute of maritime Training
- Maritime Training Institute (Shipping Corporation of India)
- Tolani maritime institute
- Anglo Eastern Maritime Academy
- Great Eastern Institute of Maritime Studies
- Samundra Institute of Maritime Studies



## ESM NEWS

## Saluting the Heroes of ESM's Quiet Success Story

*"Learning is not attained by chance, it must be sought for with ardor and diligence" – Abigail Adams  
Yet another edition of inspirational journeys of ESM's Heroes, in their own words, in their own success.*

### Ms. Natasha D Souza

*"It has been a very good journey, I had many opportunities to learn and have worked under some great seniors in the company".*

Natasha joined crewing operations at ESM Mumbai and has an eventful journey throughout her seventeen years in the company. Starting her career at an entry position, she steadily progressed in various other roles through her will to learn and develop herself, as the company expanded its footprint within the industry. "Things started to change with many more vessels joining our existing managed fleet. I got a chance to learn a lot of things in main fleet crewing. After few years I shifted to the Travel desk where I spent a lot of time. And now I am working in crewing for offshore.. I feel I am quite lucky that I had a chance to do so many different things all this while"

Indeed once ESM established itself as a leading ship manager and acquired partnership with industry major – British Petroleum Maritime Services (BPMS) for managing its crewing

operations, it was such multi skills that were required for delivering performance. Natasha effectively managed the BPMS operations, garnering appreciation for ESM by the BPMS team.

Armed with a multitude of experience in main fleet crewing and travel division in a short span of time, she was soon offered to assist in another project - developing and designing the 'Travel' module of the ship management software-Phoenix, by the subsidiary company, South Nest Software Services (SNSS).

With a visible infectious energy, she recalls the experience, "I was asked by Ma'am (Ms Sikha Singh, Deputy CEO) for inputs in creating the software, based on the processes we followed in operations. The design, outline and functioning of the travel module was accordingly developed and used by the software engineers for the module. "

Concluding her account of the journey, Natasha endorses the company's disposition of fostering the Indian seafarer in International maritime service. She observes how the company's interest in grooming future maritime leaders led to establishing the world class maritime institute (SIMS) by its founders. "I have never seen any other maritime company (in Mumbai) making such infrastructural efforts. We also employ Indian seafarers from top to bottom in all ranks, unlike other maritime companies who hire other nationality crew in much lower wages."



Natasha joined ESM, Mumbai in 2000 and has been part of significant process upgrades in the company. We congratulate her on the many achievements and wish her continued success in the company.

### Mr. Rathinakumar Subramanian

Kumar has spearheaded the digital transformation within the Executive Group of Companies. From servers, cloud systems, risk management to onboard IT systems, his team has grown in supporting and increasing efficiencies for all the group companies.



Being a spirited techie by nature without any previous experience in the marine industry, Kumar immensely enjoyed learning on the job. "Here, as long as you want to innovate, learn something and contribute to the system, management keeps supporting you."

Making a committed promise of imbibing the knowledge and applying it in executing solutions, he says is a company culture from top management to all levels

*"ESM became family to me."*

Having worked in his first overseas job (in Singapore) for five years, Kumar reminisces the grim circumstances before he joined ESM.

"During that time (in 2004), my previous employer was downsizing staff and pay. I was looking for a good employer who would take care as I was ready to put in equal and more hard work for my employer. This opportunity (to work with ESM) came at a time when we needed the financial support", he said with gratitude.

During his ongoing tenure at ESM, Kumar has not only grown the company's systems but also his family. His better half, who was working with ESM for a year before he joined, went on to pursue Motherhood and a PhD eventually, whilst Kumar continued to establish his career at ESM in building IT systems.

Kumar joined ESM Singapore in the year 2004 in the IT systems team and has made immense contributions to the digital upgrade of the company's systems.

## ESM NEWS

## ESM's New senior Appointments of 2018 announced

Fresh batch of new leaders have been appointed at ESM with effect from 1st of March 2018. Subsequent to the completion of assessments over a period of time conducted in various stages followed by mentorship with Senior leaders, the growing talent pipeline has been heralded as the foundation for the future of the Organisation. This is in continuation to the Leadership Development and Organizational Growth programme within the Executive Group of Companies.

The below are the first batch of new appointments for the year 2018 and needless to mention the Leadership Development Programme continues to groom more individual candidates for their future responsibilities.

Many congratulations and continued success to our new leadership!



**Mr. Arvind Saxena**

Current Position: Director, Technical

With over a decade of onboard experience and the first Chief Engineer to join on shore from ESM fleet in the year 2002, Mr. Saxena's journey in the Company progressed in quick succession from Technical Manager to Director, Technical. Mr. Saxena oversees the operations and technical support departments of ESM, ensuring the fleet is sailing in fine form.

New Appointment: Assistant Managing Director



**Capt. Thomas Varghese**

Current Position: Manager, Vetting and Operations

With an illustrious sailing experience of sixteen years, Capt Thomas sailed as a Master in ESM managed fleet of vessels, before taking up shore job as Superintendent at ESM Singapore in 2006. Over the decade, Capt Thomas held various positions whilst being in charge of Vetting and Operations in the company.

New Appointment: General Manager Vetting & Operations



**Mr. Nishant Surana**

Current Position: Manager, Accounts

Nishant joined ESM, Singapore in 2012 with a strong financial experience of seven years in varied industries. He has significantly contributed in the growth of the company as well as the Executive Group of Companies.

New Appointment: General Manager, Finance & Accounts



**Capt. Sumit Bhagat**

Current Position: Senior HSEQA Superintendent

Almost over three decades of experience in the industry, Capt Sumit sailed with ESM and other leading ship managers, before he took up a shore position eleven years back. He joined ESM Singapore in the year 2010 and has held positions within its subsidiary company, Executive Offshore, whilst contributing to ensure the highest quality and safety standards.

New Appointment: Assistant Manager, HSEQA



**EXECUTIVE**  
**NEWS BULLETIN**